

# KDE4 - an integration platform for IT infrastructure management

Thomas Groß

Chemnitz, Germany

[thomas.gross@teegee.de](mailto:thomas.gross@teegee.de)



Berlin 2011



# KDE is my place for

- office, communication, ...
- development
- **administration** (services, machines, ...)

**I want to access my network(objects) from KDE direct**



# concepts

**show** information from the network *in* the desktop

**control** network objects

**organise** information

easy to **change** (add/delete/move widgets)

**individual**: different accounts → different desktops



Berlin 2011



# task specific desktops

put all information around a task / theme  
to one virtual desktop

- easy overview (useful for non experts too)
- great for service companies
- different (complex) desktops for  
different accounts



# technologies

widgets: superkaramba, plasmoids

object descriptions in an openldap db  
+ scripts to generate the widgets

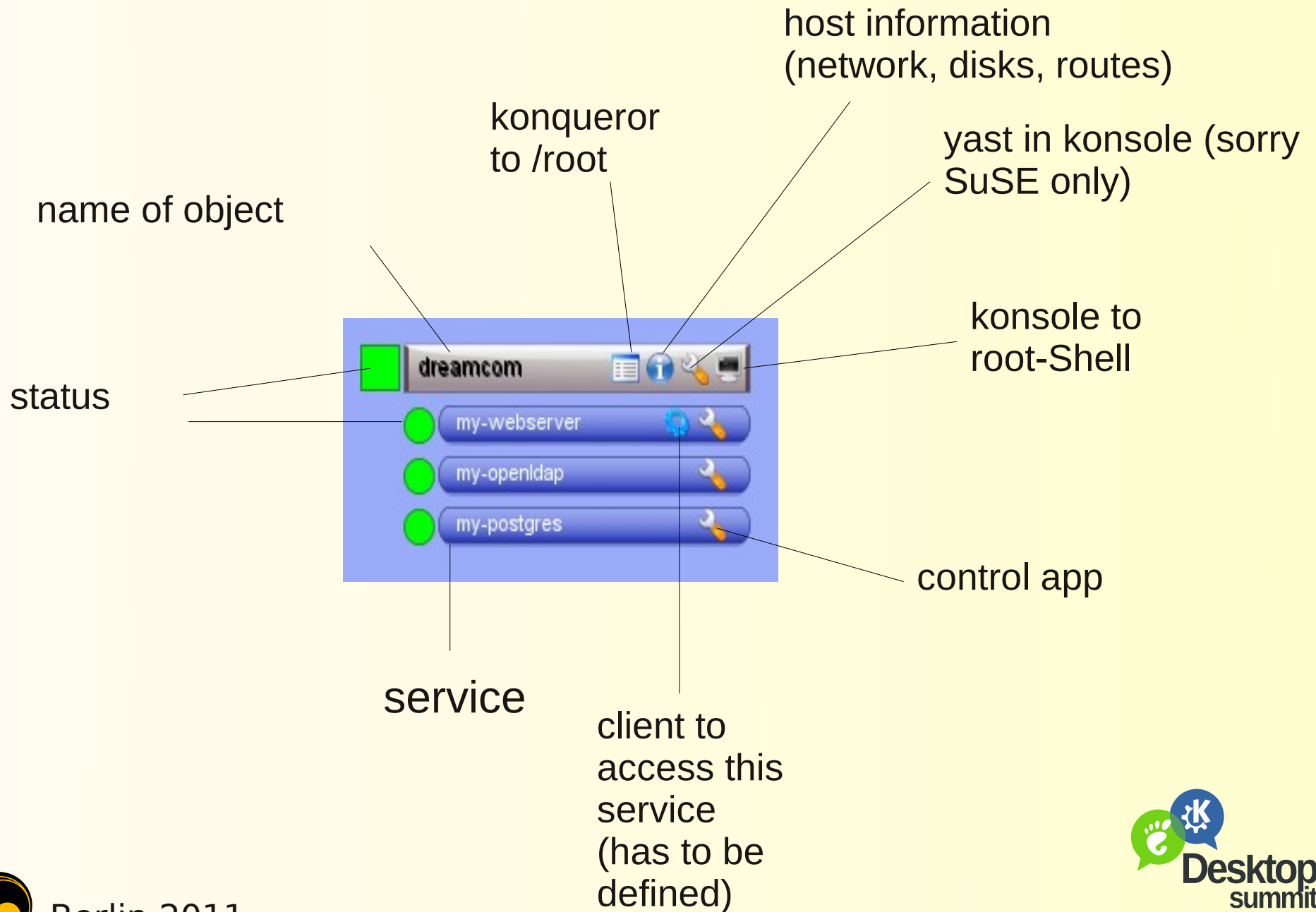
openssh autologin to hosts

scripts for checks (monitoring) and actions

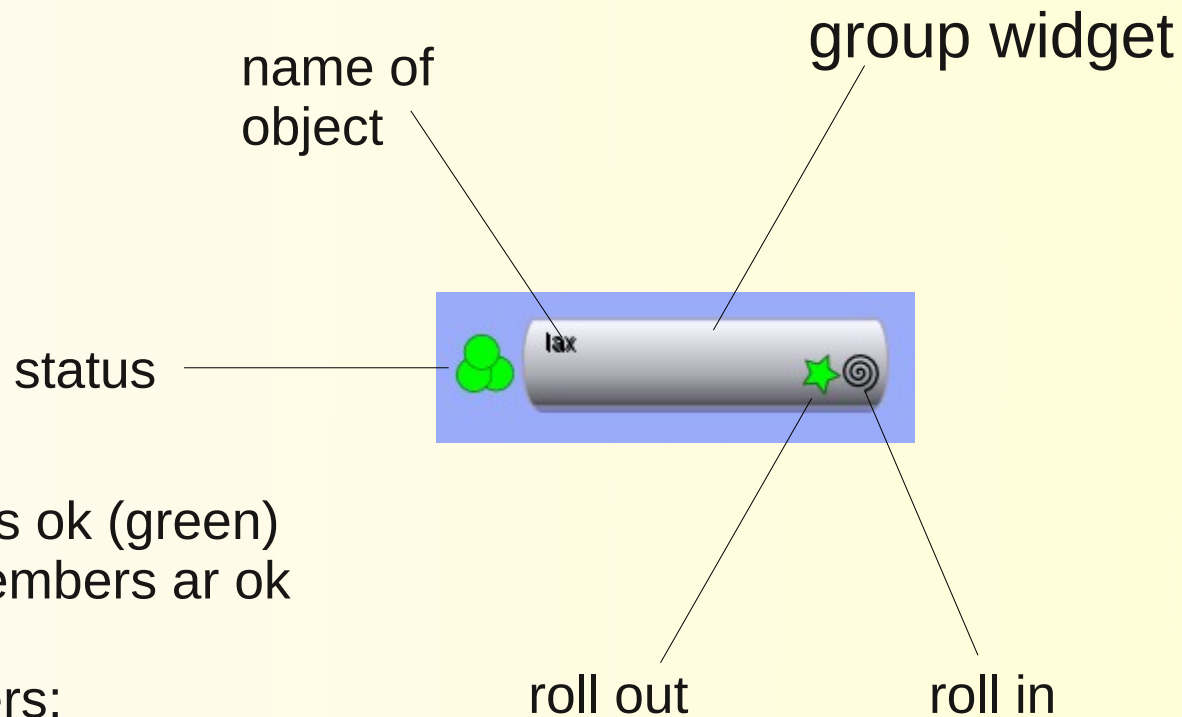
kommander based mini apps



# widget: host + services



# widget: groups



status is ok (green)  
if all members are ok

members:  
hosts  
services  
devices  
groups



Berlin 2011

# theme file (sk widget)

```
KARAMBA X=100 Y=100 W=226 H=26 interval=0 locked=false  
image x=25 y=0 path="host-hell-klein.png"
```

```
text x=32 y=5 value="mail" shadow=1 color=0,0,0 align=left fontsize=12  
font="Bitstream"
```

```
image x=0 y=1 sensor=program  
program="lax-host-check host=mail,laxnet=buero,o=teegee,ou=lax"  
interval=600000
```

```
<GROUP> x=145 y=5  
image x=0 y=0 path="log.png" TOOLTIP="          Konqueror  "  
image x=20 y=0 path="info.png" TOOLTIP="          192.168.10.110 - Mailserver"  
image x=60 y=0 path="konsole.png" TOOLTIP="          Root-Shell  "
```

```
CLICKAREA x=0 y=0 w=18 h=18 preview=false SENSOR=PROGRAM  
ONCLICK="konqueror fish://root@192.168.99.111"  
CLICKAREA x=20 y=0 w=18 h=18 preview=false SENSOR=PROGRAM  
ONCLICK="lax-host-info-html mail"  
CLICKAREA x=60 y=0 w=18 h=18 preview=false SENSOR=PROGRAM  
ONCLICK="konsole -title root@mail -e lax-login  
host=mail,laxnet=buero,o=teegee,ou=lax"  
</GROUP>
```



Berlin 2011





# manage widgets

widget templates for

hosts, services, groups, text, devices, programs

scripts to manage the widgets

```
sk-host-add , -list, -del
```

```
sk-host-full-add, -list, -del
```

```
sk-device-, sk-service-, sk-info-,  
sk-group-
```



# object descriptions

store object descriptions in openldap

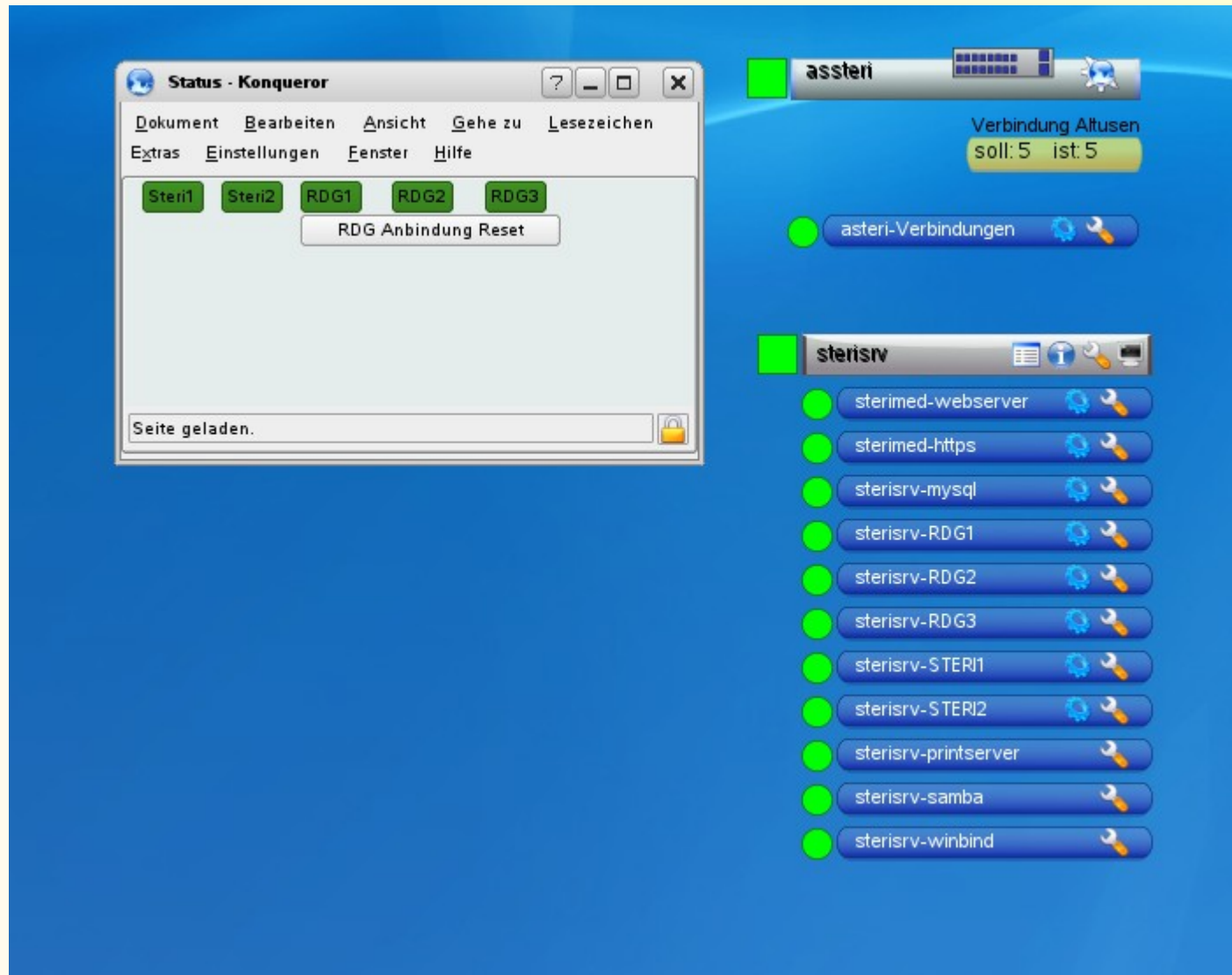
seperate ldap scheme (lax-scheme)

scripts and a gui to access the openldap

```
laxdb-service-add, -list, -del  
Laxdb-service-attribute
```

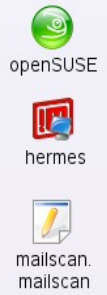


# service desktop



Berlin 2011





**tgpc**

- laxmonitord
- PostgresDB
- laxtad
- Tunnel60
- Tunnel80
- apache-tgpc
- Monitoring-Fehler
- offene\_Alarme

**hoth**

- openvpn-Server
- firewall-DSL

**snoopy**

- intraWeb

**devel**

- apache-devel

Host --- **winxp2** --- Controller

- winxp2-sshd

Service

**gg**

**mail**

- mailserver
- mail-clamd
- mail-amavisd

**herkules**

- intraWeb
- laxtad

Anz. Prozesse  
Anzahl: 186

KDE.ORG

Mail-Liste

- laxmonitord

- intraWeb

**2009-02-19 13:19**  
Tel: 0987654321



# LAX

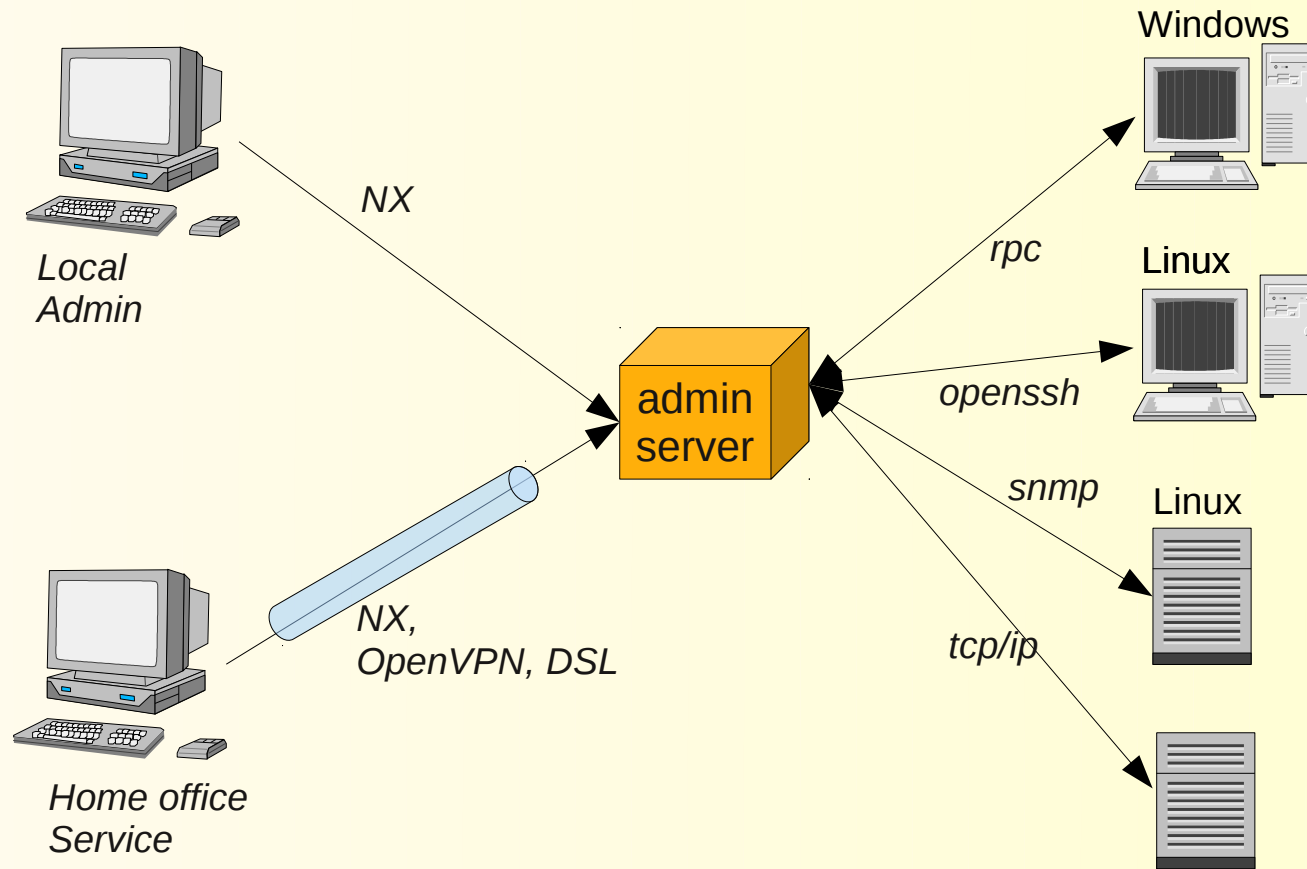
Remote Control Desktop



Berlin 2011



# admin context



# what we lack of

store / restore a virtual desktop

a replacement for kommander  
or kommander for KDE4

nice plasmoids

trigger widgets



Berlin 2011



# thanks

questions?

ideas?



Berlin 2011

