

# LiMux



Landeshauptstadt  
München

## LiMux Desktop Retrospective

*“Five years of governmental Linux desktops in München”*

Florian Maier (City of Munich, Project LiMux)

August 8th, 2011



08.08.2011



# LiMux Desktop Retrospective



**M**   
**YOU**  
MUNICH LOVES YOU



## About Munich:

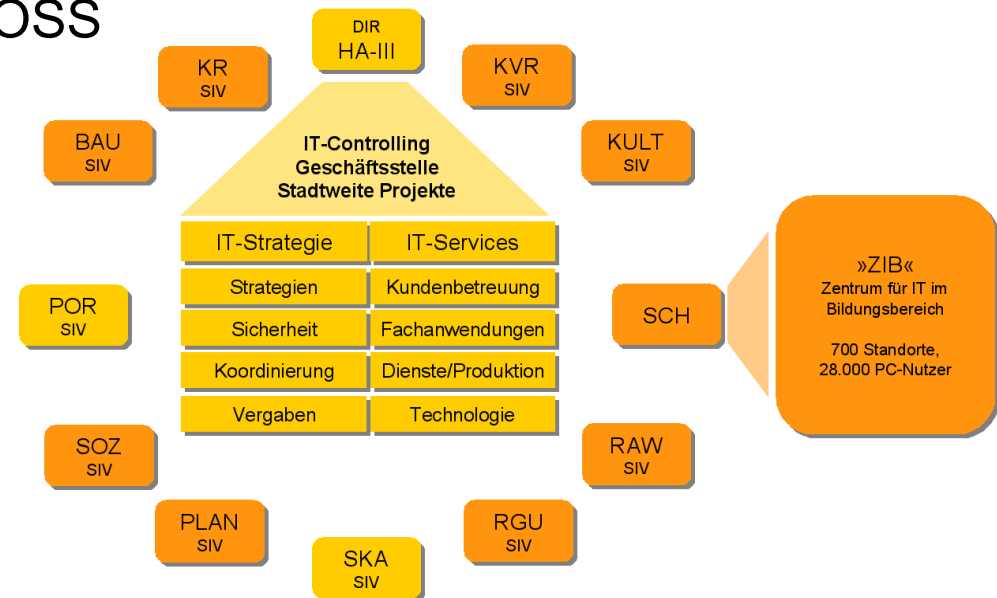
- 1.3 mio citizens
- 3<sup>rd</sup> biggest town in GER
- 12<sup>th</sup> biggest town in EU
- Many IT companies



Die Frankfurter Allgemeine Zeitung, Presseamt München

## LiMux is part of the IT in Munich

- 33.000 employees are trained using OSS
- 15.000 PC-workplaces
  - Additional 28,000 in schools
- 1.000 IT-employees
- 51 service locations
- 22 independent IT-departments
- 6,800 workplaces are using the linux client
  - goal for 2012 is 8500 clients



## LiMux project objectives

### Increased **independence**

of software vendors, consultants, platforms, time  
→ freedom of choice

### More possibilities to decide about **costs**

→ reduction in the mid term

### Decisions

**Free software** and **open standards** for the administrations' PCs

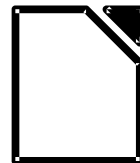
**Plattform-open business applications** in the future



# LiMux desktop components



proprietary alien



The Document Foundation

## Desktop deployment with GOsa & FAI

### **FAI** - Fully Automatic Installation

- Automatic System Installation
- Change Management System

<http://fai-project.org/>



### **- Gonicus System Administrator**

- Web-based administration tool

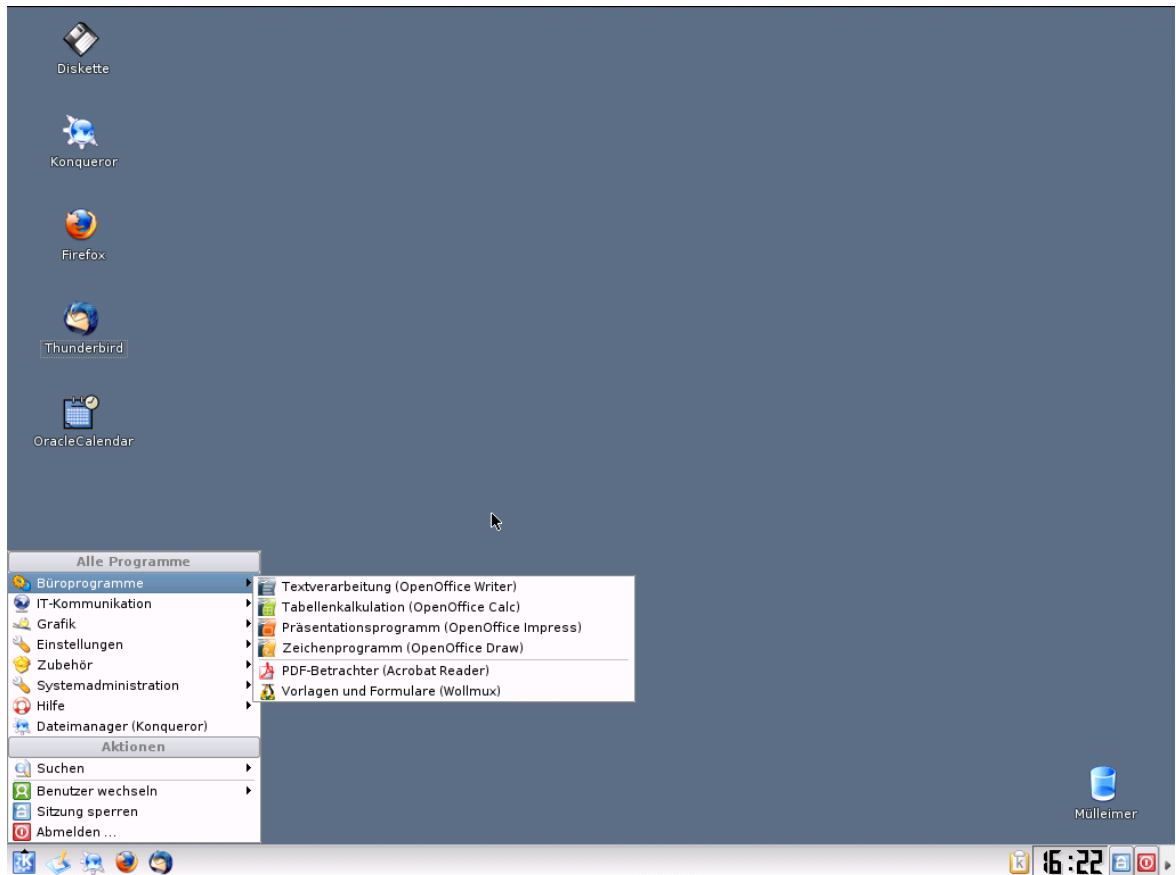
<https://oss.gonicus.de/labs/gosa/>



Settings are read from **LDAP** and used to configure **KDE** with a set of python and bash scripts

## LiMux 4.0 – the “bleeding” edge

- **Ubuntu 10.04 LTS**
- **KDE 3.5.12 (Trinity)**
- Firefox 3.6.x
- Thunderbird 3.1.x
- Kernel 2.6.32
- OpenOffice.org 3.2.1



Releasedate: 08/2011

## Lessons learned

- **Developments wears many hats like „security“, „usability“, „accessibility“**
- **Using and managing KDE 3.5 (Trinity) becomes more and more difficult**
- **Switching distributions has hidden challenges for development**
- **User acceptance is vital for adoption of the linux migration and users love tools!**
- **Users are more conservative about their business apps than about their desktop environment**
- **Community work is very important**





*„You never change things by fighting the existing reality. To change something, build a new model that makes the existing model obsolete.“*



- R. Buckminster Fuller  
Fuller  
American architect,  
author, designer, inventor,  
and futurist (1895 – 1983)

## Lessons learned

**PS.: Yes, we would do it again!  
;-)**

## Questions?



**Thanks for your attention!**

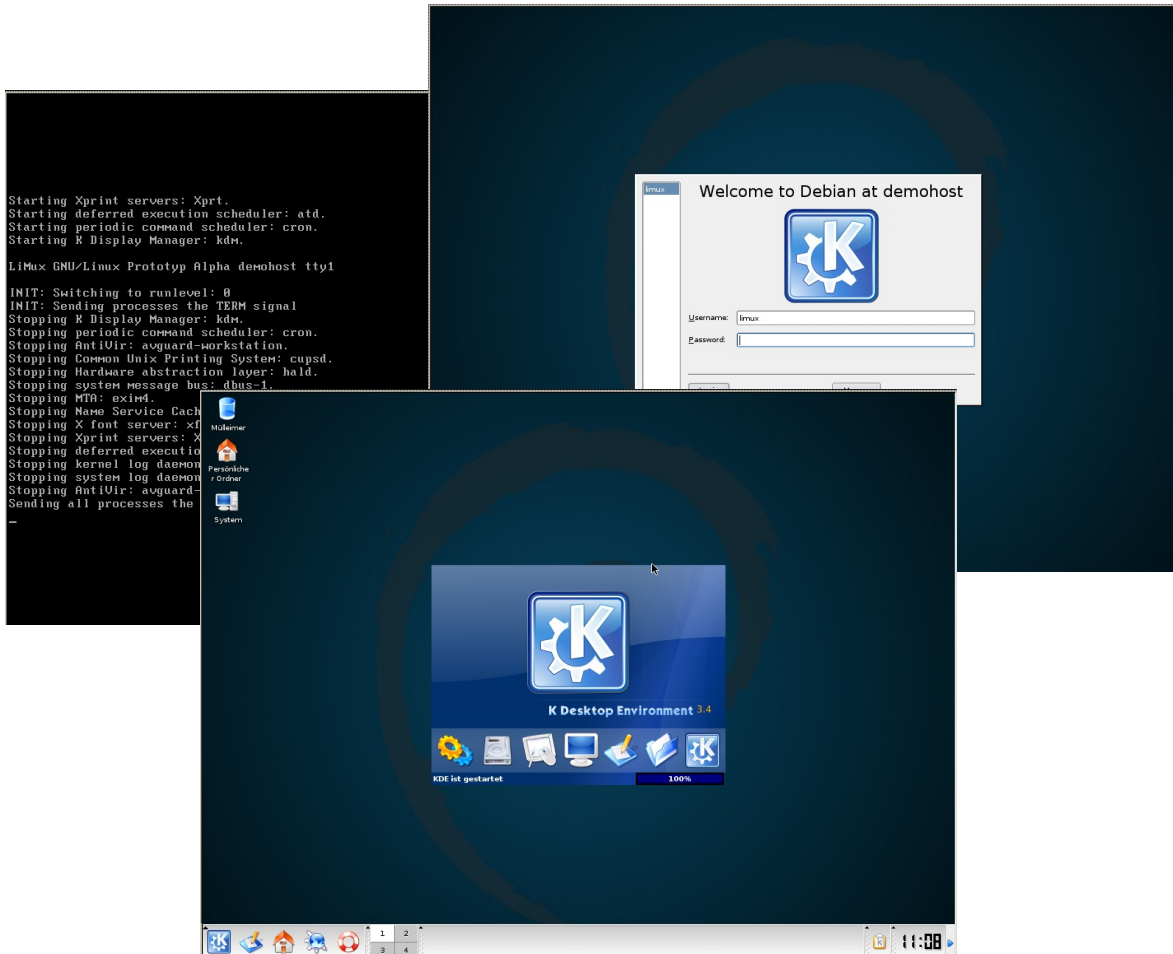
**Get in touch: <http://www.muenchen.de/limux>**

# LiMux Desktop evolution since 2006



[http://scienceblogs.com/laelaps/upload/2009/11/the\\_march\\_of\\_progress\\_the/upstart-thumb-500x313-21767.jpg](http://scienceblogs.com/laelaps/upload/2009/11/the_march_of_progress_the/upstart-thumb-500x313-21767.jpg)

# LiMux 0.9 (alpha) – release date 03/2006



Releasedate: 03/2006

## Facts:

**FAI-CD Installation**

**Debian Sarge**

**KDE 3.4**

**Firefox 1.0.x**

**Thunderbird 1.0.x**

**Kernel 2.6.8**

**OpenOffice.org 1.9.x**

# LiMux 1.0 – release date 09/2006



## Facts:

**GOSA/FAI Installation**

**LDAP Configuration**

**Debian Sarge**

**KDE 3.5.3**

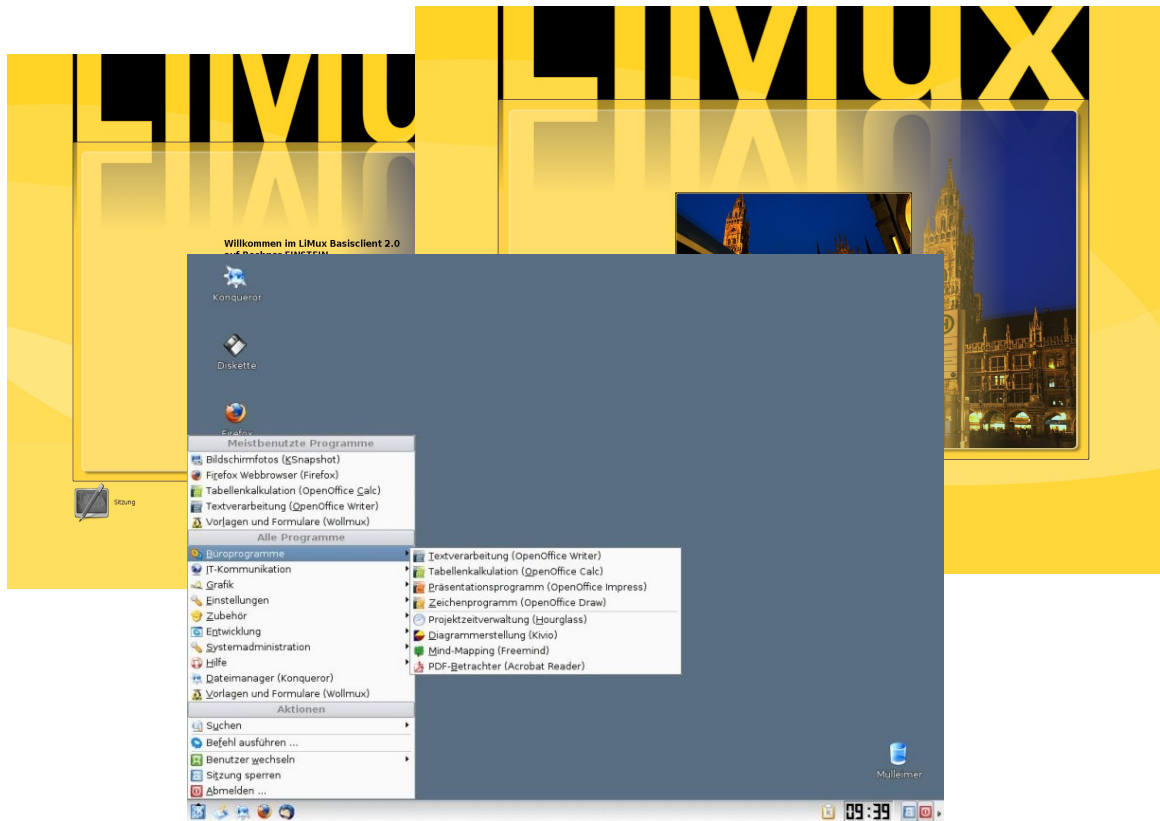
**Firefox 1.5.x**

**Thunderbird 1.5.x**

**Kernel 2.6.17**

**OpenOffice.org 2.x**

# LiMux 2.0 – release date 10/2008



## Facts:

**LDAP Realtime Features**

**“MachMichSchön”**

**Debian Sarge/Etch**

**KDE 3.5.9**

**Firefox 2.0.x**

**Thunderbird 2.0.x**

**Kernel 2.6.26**

**OpenOffice.org 2.4.x**

## LiMux 3.0 – release date 12/2010



### Facts:

**Ubuntu Transit**

**Ubuntu 8.04 LTS**

**KDE 3.5.10**

**Firefox 3.0.x**

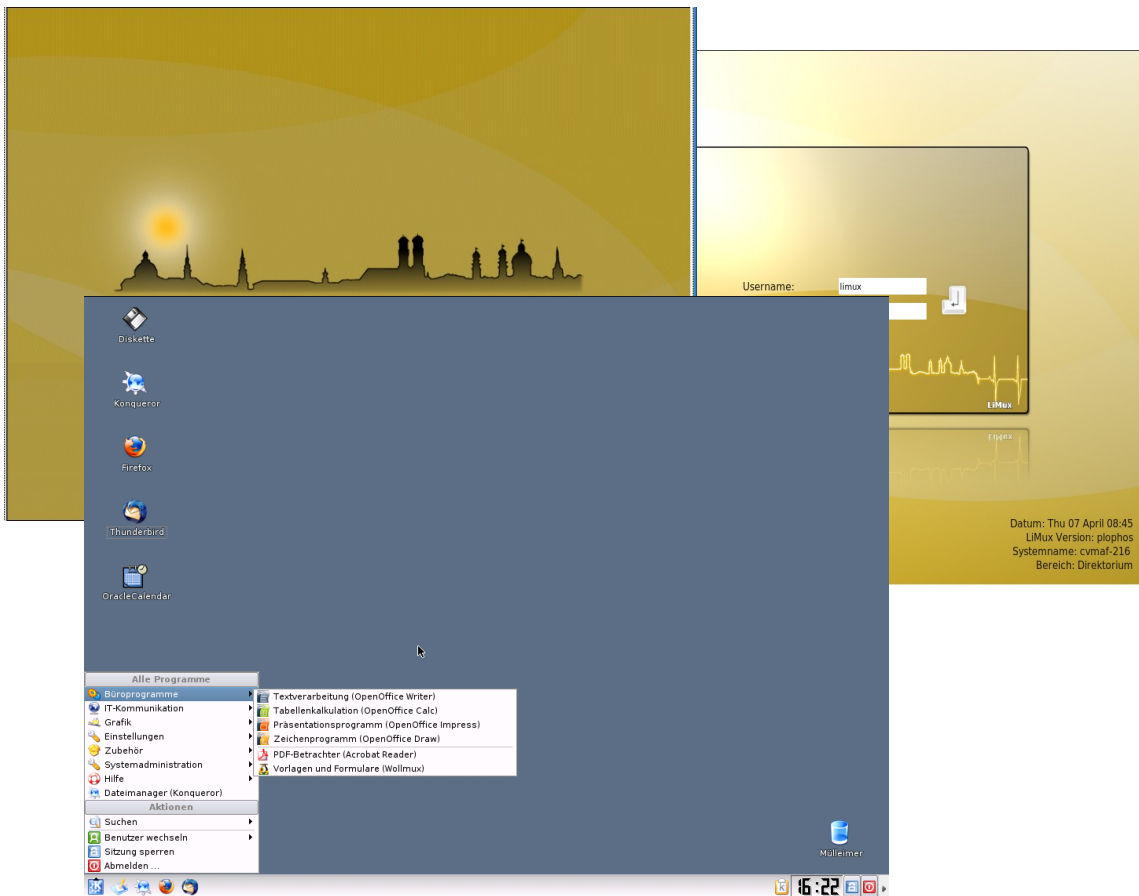
**Thunderbird 2.0.x**

**Kernel 2.6.32**

**OpenOffice.org 3.0.1**



# LiMux 4.0 – release date 08/2011



## Facts:

**Ubuntu 10.04 LTS**

**KDE 3.5.12 (Trinity)**

**Firefox 3.6.x**

**Thunderbird 3.1.x**

**Kernel 2.6.32**

**OpenOffice.org 3.2.1**